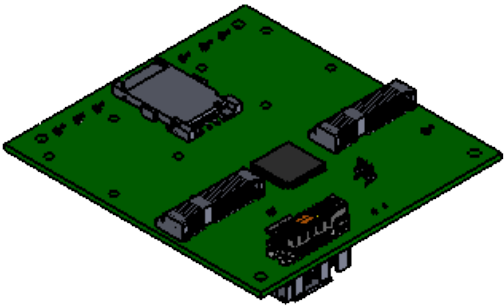
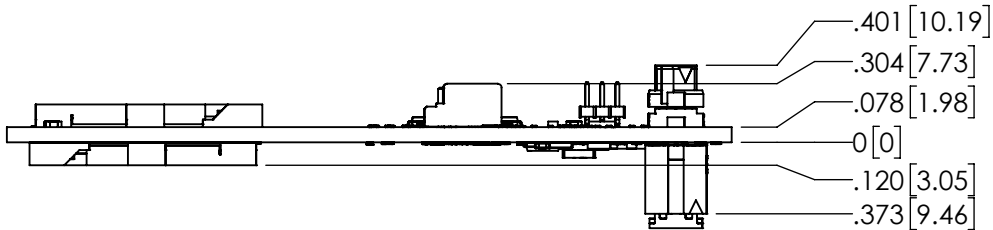
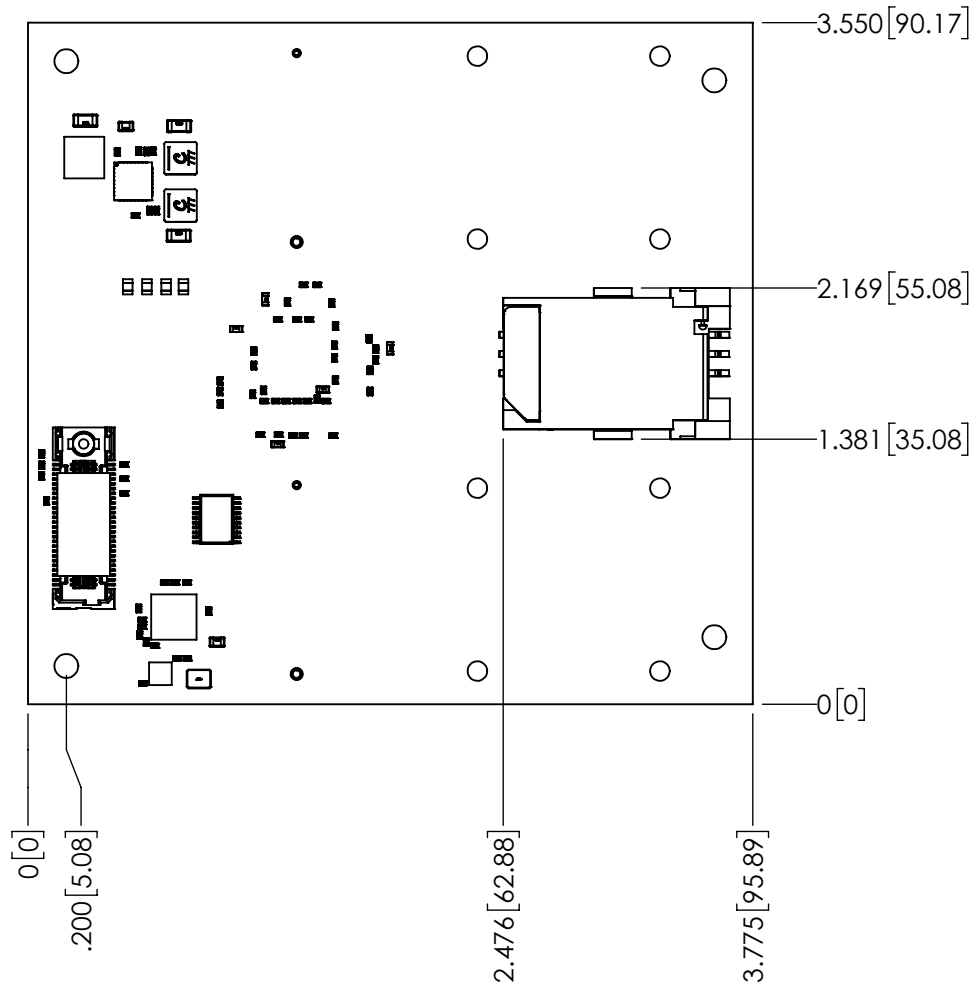
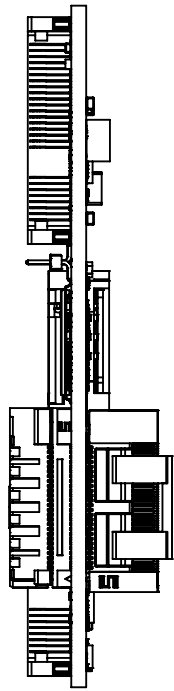
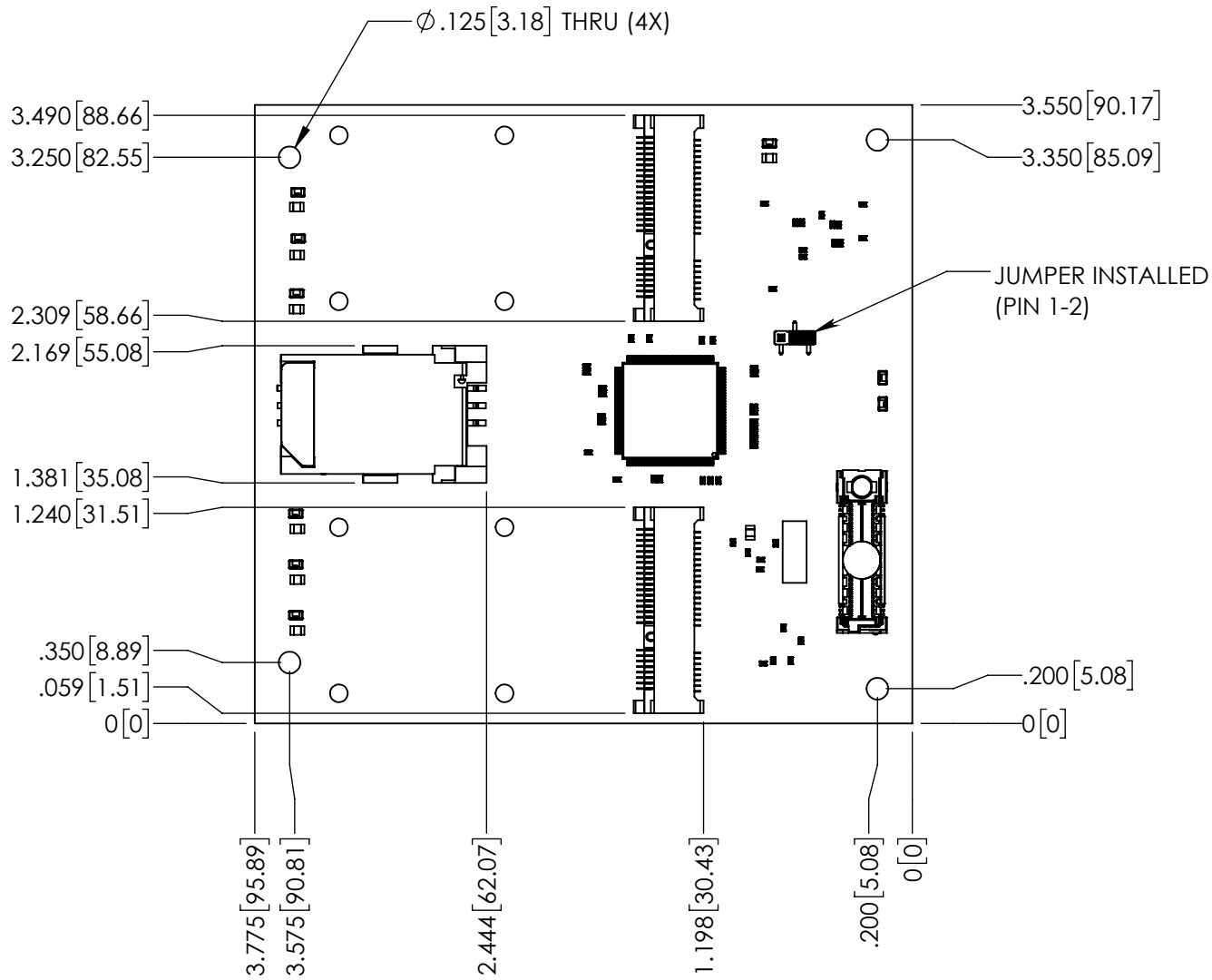


REVISION INFORMATION			
REV.	DESCRIPTION	DATE	NAME
A	NEW DRAWING	09/08/2017	V. TRAN



NOTE:

- STAND-OFFS AND SCREWS COMPATIBILITY:
- M-F #4-40 x .600in (Screw: #4-40 x .250in Pan-head)
 - M-F M3x0.5 x 15.24mm (Screw: M3x0.5 x 6mm Pan-head)