

Features

Connectivity

- PCIe/104 OneBank (USB Interface)

Analog Inputs

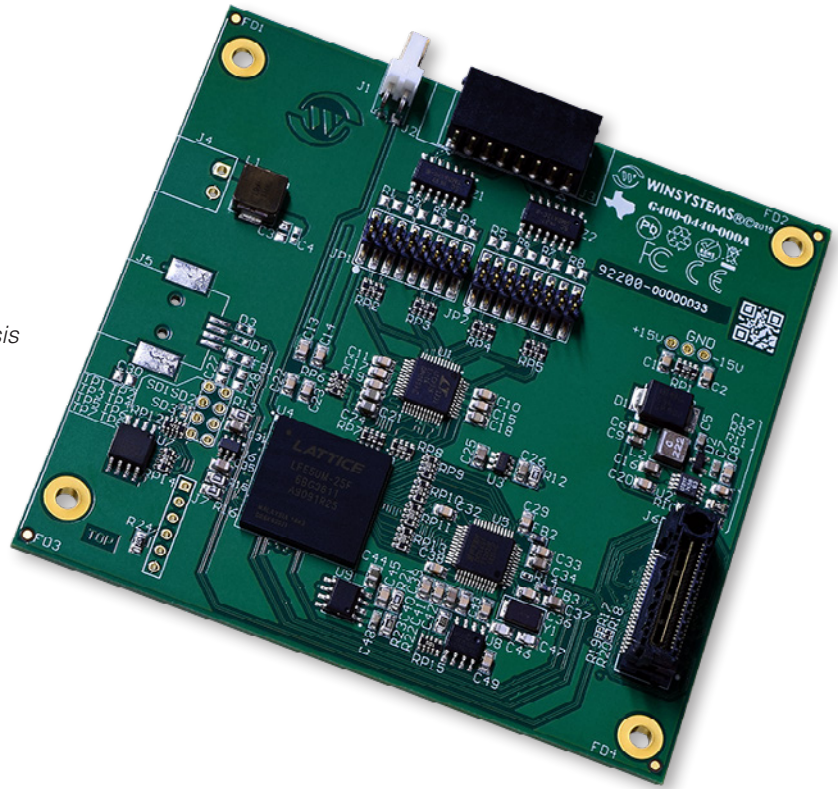
- 16-bit Analog-to-Digital (ADC) Converter
- Wide Common Mode Range Inputs
- Eight Analog Input Ranges:
0V-5V, 0V-5.12V, $\pm 5V$, $\pm 5.12V$, 0V to 10V,
0V to 10.24V, $\pm 10V$, $\pm 10.24V$
Configurable on a conversion-by-conversion basis
- 8x Differential Input Channels support both Bipolar or Unipolar Inputs
- Available with 4-20mA Input Configuration

Capabilities

- Sample Rate up to 1MSPS in Burst Mode
- Test Jumpers Provide On-board Voltages
- Programmable to cycle through a sequence of channels and ranges

Rugged Design for Demanding Environments

- $-40^{\circ}C$ to $+85^{\circ}C$ Operating Temperature Range
- PC/104 Form Factor
- Shock and Vibration Tested

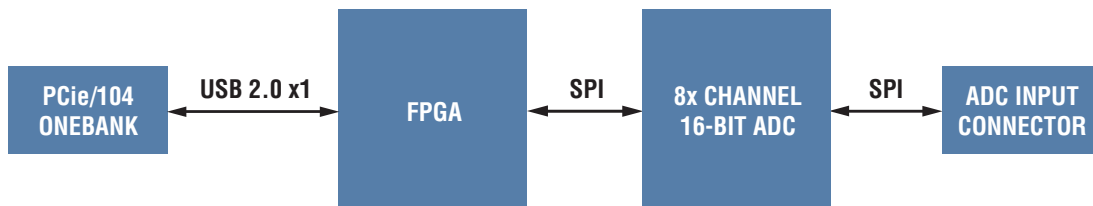


Product Description

The PX1-I440-ADC is an industrial data acquisition module for embedded systems with PCIe/104 OneBank™ expansion. This module features eight differential ADC (Analog-to-Digital converter) inputs based on the Analog Devices LTC2335-16 ADC. Analog to digital inputs terminate to a single 16-pin Box Header. The PX1-I440-ADC provides flexible voltage ranges from 0V-5V, 0V-5.12V, $\pm 5V$, $\pm 5.12V$, 0V to 10V, 0V to 10.24V, $\pm 10V$, $\pm 10.24V$.

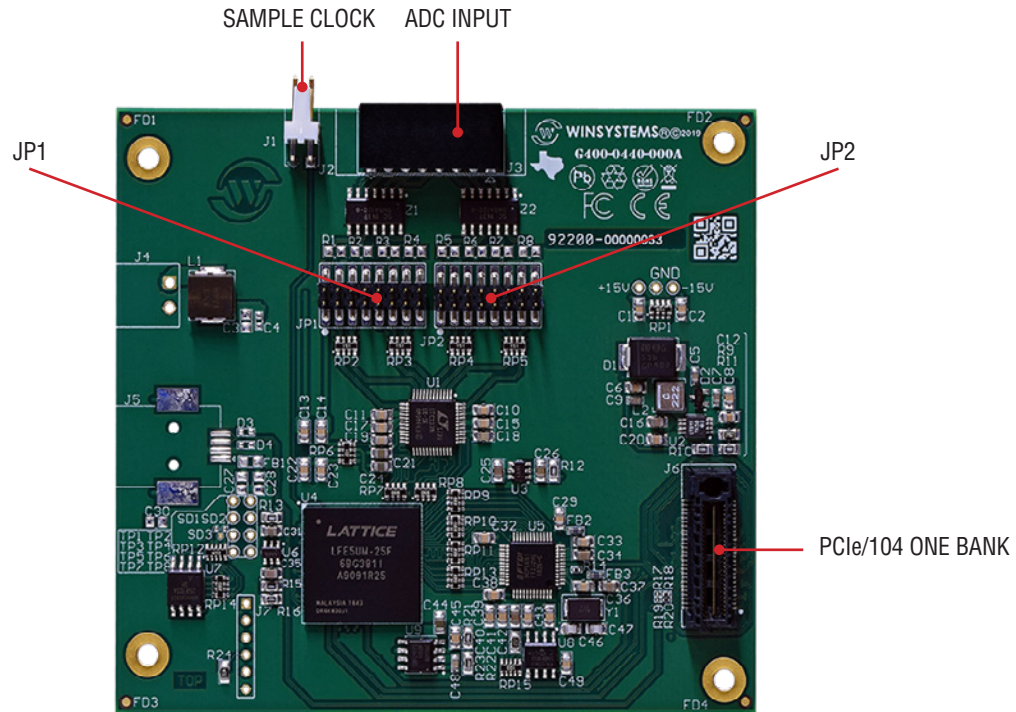
The PX1-I440-ADC-420 configuration includes precision resistors on-board for measuring 4-20mA current loop inputs from a variety of sensors. Customized populations are available for OEM clients that need a mix of 4-20mA and Voltage inputs.

Block Diagram



PX1-I440-ADC

Connectors



Technical Specifications

ADC MODULE	PX1-I440-ADC 16-bit, Linear Technology LTC2335-16 analog-to-digital converter	PX1-I440-ADC-420 16-bit, Linear Technology LTC2335-16 analog-to-digital converter
CHANNELS	<ul style="list-style-type: none"> Eight Differential Inputs: <ul style="list-style-type: none"> Configurable as Bipolar or Unipolar Programmable to cycle through a sequence of channels and ranges 	
ADC POWER RANGES	<ul style="list-style-type: none"> 0-5V, 0V-5.12V, ±5V, ±5.12V, 0V to 10V, 0V to 10.24V, ±10V, ±10.24V 	<ul style="list-style-type: none"> 4mA to 20mA
SOFTWARE	<ul style="list-style-type: none"> Compatible with Linux, Windows 10 	
ENVIRONMENTAL	<ul style="list-style-type: none"> Operational from -40°C to +85°C RoHS compliant 	
MECHANICAL	<ul style="list-style-type: none"> Dimensions – 3.55 x 3.775 inches (90 x 96 mm) Weight – 0.1 oz (100g) 	

Order Information

PART NUMBER	PX1-I440-ADC Industrial Analog-to-Digital Data Acquisition Module	PX1-I440-ADC-420 Industrial Analog-to-Digital Data Acquisition Module with 4mA to 20mA support
--------------------	---	--

Expansion and Customization Options

WinSystems provides additional cables, expansion cards, power supplies, and solid-state drives to complete your embedded computing solution including data acquisition, communications, location, and other features via PCIe/104 and M.2 interfaces. Our Application Engineers are available to guide you through product selection and customized options.

Contact an Application Engineer or visit our website for more information.



WINSYSTEMS reserves the right to make changes to products and/or documentation without further notification. Product names of other companies may be trademarks of their respective companies.